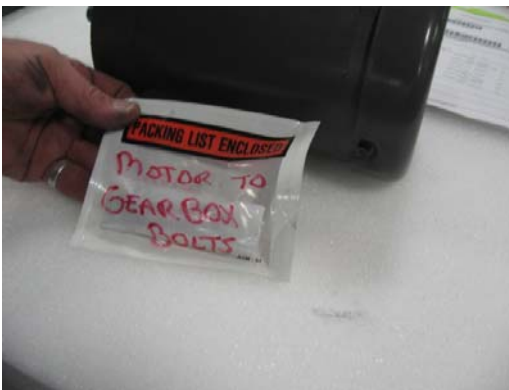


How to Unpack and Attach a Tower for a Flex LPE

1. Unpack bases, making sure you retain all hardware with the base. Using a forklift, place the base in a position on the floor that will allow you to maneuver around when attaching the tower.



2. Attach the motor to the gearbox using the included mounting bolts. Align the key slot on the motor shaft with the key in the gearbox. Ensure the electrical plug from the motor faces towards the tower. If the cord faces the other way, it will not reach.



5. Align the tower with the base. Be careful not to pinch electrical cords. Do not lower all the way onto the base. Lower the tower far enough to thread the cords into the tower.

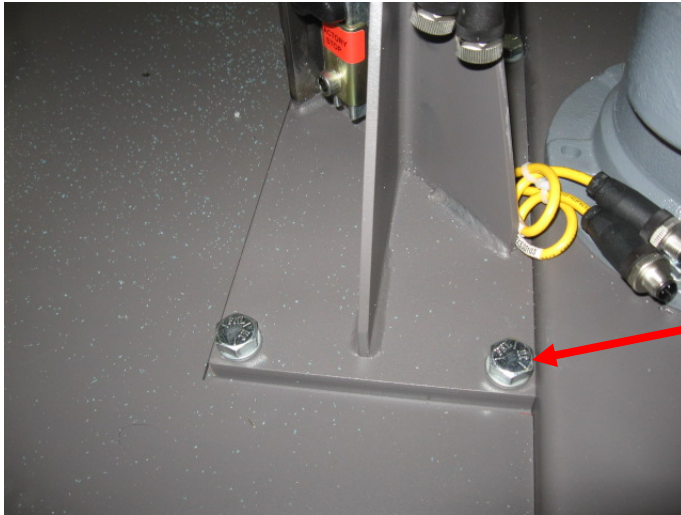


6. With the tower still suspended from the crane, thread the connection cables through the hole in the bottom of the tower.



7. Lower the base the rest of the way. Align the tower mounting bolts to the base.

8. Bolt tower to base with included bolts. Tighten the bolts, using a ¾" socket.



Use a ¾"
Socket

9. Attach the two sensor wires and the motor connector. Make sure the sensor numbers match the wire numbers on the tower and base. Loop cords with wire ties once the tower is in place.



Loop Cords
with Wire
Ties Once
Tower is in
Place



10. Once the tower is secured to the base with all four bolts, remove the eye bolt.



11. With an Allen wrench, attach the top cover to the top of the tower. The cover mounting bolts were bolted into the tower for shipping. Remove the bolts, then use them to attach the cover.

